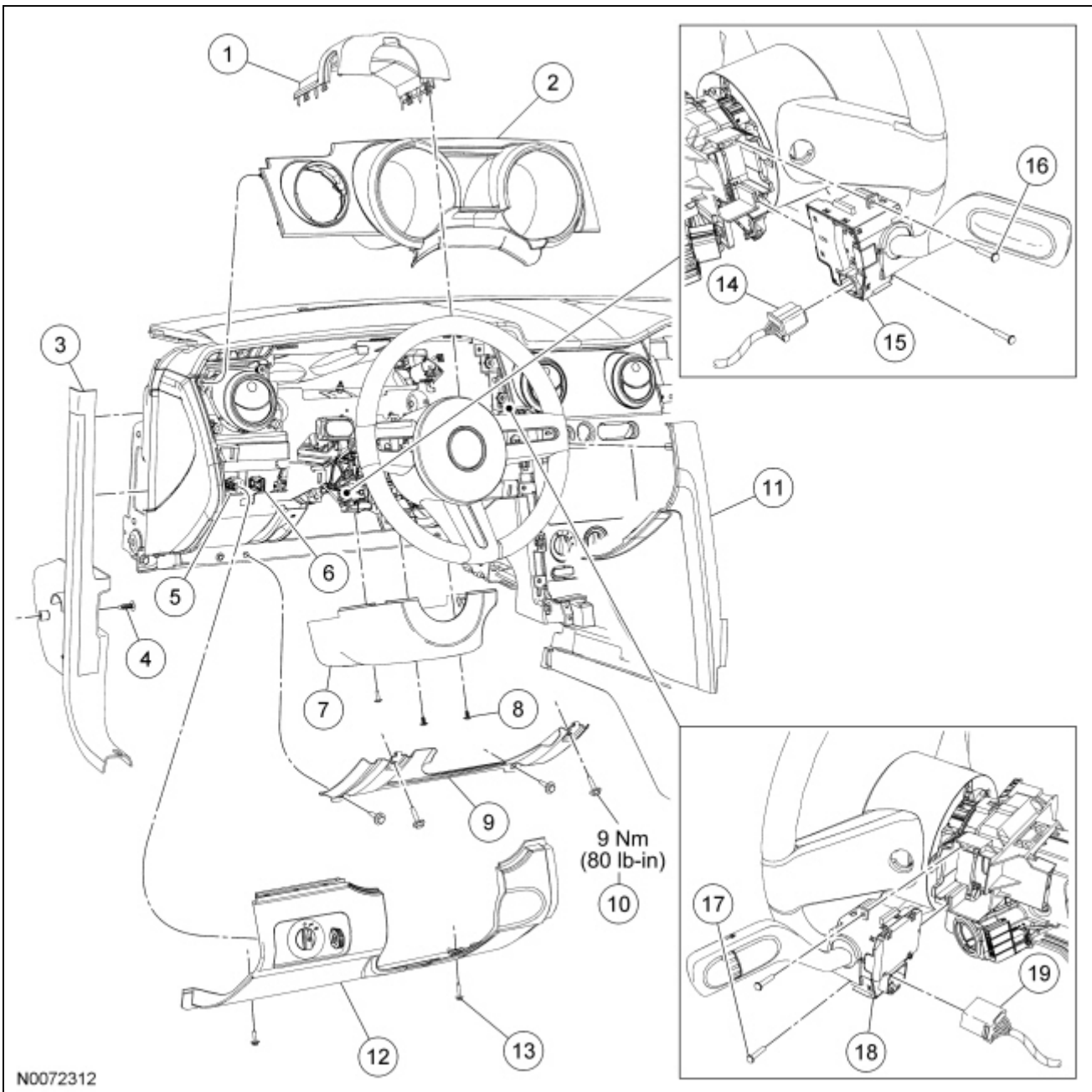


Steering Column Multifunction Switch



N0072312

Item	Part Number	Description
1	3530A	Upper steering column shroud
2	044D70	Instrument cluster finish panel
3	A30A64	LH A-pillar lower trim panel
4	W505156	LH A-pillar lower trim panel screw
5	—	Headlamp switch electrical connector (part of 14401)
6	—	Courtesy lamp switch electrical connector (part of 14401)
7	3530B	Lower steering column shroud
8	W707281	Lower steering column shroud screw (3 required)
9	04502	Steering column opening cover reinforcement

10	W505424	Steering column opening cover reinforcement bolt (4 required)
11	04608	Left center stack wing
12	04459	Steering column opening cover
13	W505156	Steering column opening cover screw (2 required)
14	—	Multifunction switch electrical connector (turn signal/warning flasher) (part of 14401)
15	13341	Multifunction switch (turn signal/warning flasher)
16	390345	Multifunction switch screw (turn signal/warning flasher) (2 required)
17	—	Multifunction switch electrical connector (windshield wiper/washer) (part of 14401)
18	17A553	Multifunction switch (windshield wiper/washer)
19	390345	Multifunction switch screw (windshield wiper/washer) (2 required)

Removal and Installation

Turn signal/headlamp switch and windshield wiper/washer switch

1. **NOTE:** The instrument cluster finish panel is held in place with retaining clips that are attached to the bezel.

Remove the instrument cluster finish panel.

2. Remove the floor console finish panel. For additional information, refer to [Section 501-12](#).
3. Remove the LH A-pillar lower trim panel.
4. Remove the left center stack wing.
5. Remove the 2 screws and the steering column opening cover.
 - Disconnect the headlamp and courtesy light switch electrical connectors.
6. Remove the 4 bolts and the steering column opening cover reinforcement.
 - To install, tighten to 9 Nm (80 lb-in).
7. Remove the upper steering column shroud by carefully pressing the sides inward.
8. Remove the 3 lower steering column shroud screws and the shroud.

Turn signal/headlamp switch

9. Disconnect the turn signal/headlamp switch electrical connector.
10. Remove the 2 screws and the turn signal/headlamp switch.

Windshield wiper/washer switch

11. Disconnect the windshield wiper/washer switch electrical connector.
12. Remove the 2 screws and the windshield wiper/washer switch.

Turn signal/headlamp switch and windshield wiper/washer switch

13. To install, reverse the removal procedure.

